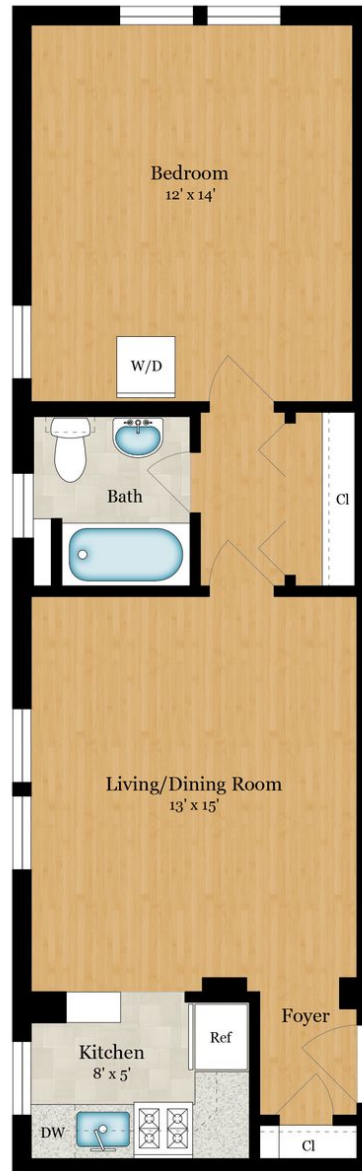


3100 WISCONSIN AVENUE, NW | UNIT 406

WASHINGTON, DC 200016



Total Square Footage: 601 SQ FT

*Calculated from outside face of exterior walls
and center line of demising walls.*

FLOOR PLAN

Ceiling Height: 8'-10"



Rendering by Arcdimension
All measurements are approximate. While deemed reliable, no information
on these floor plans should be relied upon without independent verification.

Presented by David Ochsmann, Compass | Vassar Broermann Group
Tel: 202.683.6330
Email: david@thevbgroup.com



VASSAR BROERMANN

3100 WISCONSIN AVE
NW, UNIT 406
WASHINGTON, DC 20016

\$325,000

1 BED

1 BATH

601 SQ.FT

DAVID OCHSMAN

Vice President

M: 301.442.2287

O: 301.298.1001

david@thevbgroup.com

COMPASS

*DC, Compass Real Estate is a licensed real estate broker and abides by Equal Housing Opportunity laws. No
guarantee, warranty or representation of any kind is made regarding the completeness or accuracy of
descriptions or measurements (including square footage measurements and property condition), such should be
independently verified, and Compass expressly disclaims any liability in connection therewith.